

League of Women Voters
of Dallas

VOTER



A nonpartisan organization that encourages informed participation in government and influences public policy through education and advocacy.

21ST ANNUAL SUSAN B. ANTHONY AWARDEE DEBBIE DUDLEY BRANSON

A respected and accomplished attorney in Dallas, Debbie Dudley Branson has demonstrated a strong commitment to her profession. She maintains a passionate belief that individual lawyers have an obligation to be community leaders, public servants, and forces for positive change. She represents the fourth consecutive generation of lawyers in her family.

Branson is the immediate past Chair of the Parkland Health & Hospital System Board of Managers in Dallas. She led Parkland through a very difficult time that included correcting 498 deficiencies from Parkland not meeting the Medicare Conditions of Participation and searching for a new President/CEO at Parkland. Her work resulted in Branson receiving the 87th Annual Linz Award in recognition of her dedicated leadership in the revitalization of Parkland Hospital. The Linz Award is recognized as Dallas' most prestigious award and honors citizens whose humanitarian efforts create the greatest benefit to the City of Dallas.

Branson is a lawyer in the law offices of Frank L. Branson, P.C., which specializes in personal injury litigation. She has served as President of the Texas Trial Lawyers Association. Professionally, she has garnered many honors over the years, including "Best Women Lawyers in Dallas," "Best Lawyers in Dallas" by *D Magazine*, Best Lawyers in America, and one of the "Texas Super Lawyers" by *Texas Monthly*. In 2011, she was named one of the the Dallas Bar Association's "Inspiring Women." Branson also received the Gayle Pettus Pontz Award from the University of Arkansas School of Law, which recognizes the achievements of a lawyer who best represents excellence and the achievement of women in the legal profession. She also received the University of Texas at Dallas' Achievement Award.

In addition to recognition she has received as a lawyer, Branson received the 2015 Texas Healthcare Trustees Star Award for her leadership of the Parkland Board. In 2014, she received "Each Moment Matters" award from the Presbyterian Communities and Services Foundation, *Modern Healthcare Magazine's* Trustee of the Year, and the Maura Women Helping Women Award. In 2012, she received the Women That Soar Award in



Business, an award that recognizes women who have triumphed professionally and are giving back to the community.

In 1999, Branson served as president of the Dallas Women's Foundation, the largest regional women's fund in the world. She has been an active board member of many other civic and legal organizations. In addition, she was a presidential appointee to the Federal Aviation Management Advisory Council and to the Securities Investor Protection Corporation, where she served as the co-chair and acting chair. Most recently, she served on Hillary Clinton's Health Care Policy Working Group.

Branson graduated as a Student of Special Distinction from Arkansas State University with a B.S.E. She received her law degree from the University of Arkansas and was given the Distinguished Law Student Award. She also earned a M.S. from UTD.

She is married to Frank Branson. They have two children, both of whom are graduates of SMU Law School, and two grandchildren. We are very proud that she has also been a member of LWV Dallas for the past 25 years.



2016 - 2017

LWV Dallas

Board of Directors

⌘ ⌘

President

Eileen Rosenblum

President Elect & Development

Cecilia McKay

Advocacy VP

Susybelle Gosslee

Membership VP

Rose Harp

Organization VPs

Mildred Pope, Fran McElvaney

Program VP - vacant

Voter Outreach VP

Elizabeth Walley

Secretary

Candice Quarles

Treasurer

Leigh Bailey Carrizales

Directors

Rebecca Acuna

Director

Bill Betzen

Education Issues

Dorie Cranshaw

Strategic Plan & Voters Guide Editor

Baranda Fermin

Director

Becky Kimbro

Marketing

Nia MacKay

Director

Ann Moy

Director

Lisa Sherrod

SBA Luncheon Co-Chair

Eleanor Sutherland

VOTER Editor

Sandy Thornton

Director

Dominique Torres

SBA Luncheon Chair

Linda Wassenich

Development, VOTER & Membership

Fran Morris Office Administrator

FROM THE PRESIDENT'S DESK

This election reminds me of how difficult it was for the suffragists to win the right to vote. The demand for women's suffrage began with the Women's Rights Convention in Seneca Falls, NY, in 1848. Elizabeth Cady Stanton and Susan B. Anthony collaborated as the leaders of the suffrage movement for many decades. They contributed significantly to the broader struggle for women's rights which Stanton called the greatest revolution the world has ever known. It took the passage of the 19th Amendment in 1919 and its ratification by the states in 1920 for women to legally vote everywhere in the United States.



The League of Women Voters is the only surviving organization from the women's suffrage movement of the early 20th century. The November 2016 election was the first time in United States history that a woman ran for President as the nominee of a major political party. We should not forget that having a major political party nominate a woman was a momentous breakthrough. Although the glass ceiling was not broken by the first woman nominee for president, we note that the ceiling did crack when she won the popular vote.

I hope we will see a woman as president of the United States in the near future. Meanwhile, we must continue to advocate for women's participation at the top levels of government.

Our democracy depends as much on how we deal with defeat as it does on how we deal with victory. We must learn to live with success and failure. We extend our best wishes to our new president-elect and his administration. We hope the men and women of both parties will work together to create change for the Americans who desperately need it. We look forward to the future that Elizabeth Cady Stanton and Susan B. Anthony envisioned in which a woman can become the leader of our great democracy.

For all of you who work so hard for the Dallas League as volunteers in the office, in voter outreach, developing programs and advocating for those who need our voice, I wish you a very special holiday season filled with peace, hope and joy.

Best regards,
Eileen Rosenblum, President

* * * * *

DECEMBER UNIT MEETINGS - Members who attend unit meetings on **December 8th** and **December 14th** will be our "grass roots", and they have the opportunity to choose program for LWV Dallas and/or LWV Texas. New issues where a legislative remedy is called for may be presented. Members also have a chance to look at standing positions to consider an update or dropping an issue as having been completed.

Often December units have a Holiday Party, a special time for fellowship and to enjoy each other, just chatting and sharing a pot luck lunch of treats from home! Or in that restaurant where you gather, sharing a special dessert! Or trying a new place with friends! Don't mind me. I hope there will be good numbers to help choose a program issue that needs attention.

Bring a friend /neighbor to watch the League in the process of making democracy work!

Eleanor Sutherland, Editor

THURSDAY, December 8, UNIT MEETINGS

WEDNESDAY, December 14, UNIT MEETING

“Program Planning and Holiday Party”

*Come and bring a friend/neighbor to chat and see the League
in the process of Making Democracy Work!*

Happy Holidays!

*** Note the change of dates, times and/or locations for the December Unit Meetings.**

<p><u>Dec. 8 ... 10:00 am</u> Thursday Morning Unit Becky Brakke 214-363-0921</p> <p><i>Holiday Party Pot Luck Salad Luncheon!</i> Home of Becky Brakke 7027 Eudora Dallas 75230</p>
<p><u>Dec. 8 ... 11:30 am</u> Far North Dallas Unit <u>RSVP</u> to Ann Grant 972-931-5628</p> <p><i>Holiday Luncheon!</i> Crossroads Grill Preston and Campbell <i>(in the Kroger shopping center strip)</i></p>
<p><u>Dec. 8.... 6:00 pm</u> Thursday Evening Unit Arline Pitt 972-243-3966</p> <p><i>Holiday Dinner and Get-Together!</i> Angela's Café 7979 Inwood Road Dallas 75219</p>
<p><u>Dec. 1410:00 am</u> Wednesday Morning Unit Mildred Pope 469-235-7077</p> <p><i>Holiday Pot Luck Brunch - Bring a favorite dish!</i> Center for Community Cooperation Piney Woods Room, 2900 Live Oak Street Dallas 75204</p>

DONOR HONOR ROLL

The following contributions have been received since the beginning of our new fiscal year.

Benefactor: Pat Sabin

Patrons: The Hon. Rick and Margaret Sorrells, Sandy Thornton, Lynne Patterson, Dr. Mona Hersch-Cochran, Alice Johnson, and Marnie Wildenthal

Memorials for Oragene Addis: The Hon. Harryette Ehrhardt and Cecilia McKay

Memorial for Elaine Wiant's mother: Judith Shure

Honor Gifts: Chris Guldi and Genie Fritz, who said, "The League office is doing a great job," in honor of Fran Morris, and Julie Lowenberg in honor of Linda Wassenich

Scholarships: Madeline Crouch, Elizabeth Walley, Ann Folz, and Dr. Mona Hersch-Cochran

Home Tour: Carol Brin, Barbara Coleman, Joyce Forney, Rose Harp, Nancy Lowden, Julie Lowenberg, Nia MacKay, Fran McElvaney, Eileen Rosenblum, Lisa Sherrod, Pat Vaughan, and Linda Wassenich

Other gifts have been received from Kathryn Tucker, Chris Guldi, Carol Donovan, Gwen McKinney, Arline Pitt, Dr. Barbara Morchower, Eileen Rosenblum, and Suzanne Willis

NORTH TEXAS GIVING DAY

LWVD just received \$1,580.51 from Communities Foundation of Texas for North Texas Giving Day to go with the \$1,545.00 donated by 21 people who designated the League for their donation. This bonus is the best LWVD has ever received and may reflect some fine tuning of bonus funds and certain criteria.

They are Fred Grinnell, Janet Follstaedt, Becky Kimbro, Charlotte Nabors, Eileen Rosenblum, Cecilia McKay, Linda Wassenich, Joyce Forney, Sandi and John Hebley, Patti and Frank Crumley, Susybelle Gosslee, Nora Burns, Elizabeth Scalise, The Hon. Lupe Valdez, John Hendricks, Bill Betzen, Susan Oviatt, Jane Pak, and three people who donated anonymously.

HOLIDAY GIVING

Need an idea for a gift for someone? How about giving that special person a gift membership in the League of Women Voters? Your gift will provide food for the mind and the opportunity to Make Democracy Work.

You can't go wrong. No guesses about size or color and no calories.

PLANNING A GIFT TO LWVD FROM YOUR ESTATE

What do you hope your legacy will be with the League of Women Voters? ...50 years of membership? ...serving on the board? ...conducting a particular study? In making your estate plans, have you thought about how you might use your estate to continue to support those organizations that are especially important to you?

One of the easiest ways you can support the League in a significant way is to include the League of Women Voters of Dallas in your estate plans. With the recent action taken at the Annual Meeting in April this year, LWVD is now one 501(c)(3) organization. Any bequest you make through your will is tax-deductible to the estate when it comes to paying estate taxes.

Normally, the board of directors is responsible for deciding how gifts that come through bequests will be used unless the donor stipulates something specific. If you want the

board to decide what the most pressing need is when your gift is realized, you simply need to state the amount or percentage of the estate that is to go to the League.

If you want your gift to be preserved in perpetuity with a rolling average of 5% of the gift, including appreciation, interest, and dividends, to accrue to the LWVD, you will need to include appropriate language in your will or in a codicil that specifies that the gift is for endowment and the corpus should be preserved in perpetuity.

Please call Linda Wassenich at 214-368-5305 if you have any questions or want to talk about options that are available to you.

For detailed advice, contact your attorney or accountant.

BEQUEST FROM ELLEN SOLENDER

The Dallas League received a bequest of \$20,000 from Ellen Solender in July. Her daughter Eliza came to the LWVD’s annual meeting in April to announce the gift. Eliza and her sister, Katie Solender of Cleveland Heights, both members of the LWV, said they hope this bequest will inspire others to give.

Ellen was given a League membership by her mother on her 21st birthday. She joined the Dallas League in 1949 when she and her husband moved to Dallas at the age of 26. Ellen graduated from SMU’s law school and subsequently taught law there. She was a champion for voting rights, women’s rights, and social justice. She was also a League member for 64 years until her death August 1, 2015.

The League is grateful to Ellen and her family for this generous bequest. She believed that the League could make a difference. This bequest will make a difference toward empowering women and men to create a more perfect democracy.

2016 LWV DALLAS HOME TOUR

The 2016 LWV Dallas Home Tour, held on Sunday, October 23, featured the “Uncommon Design” homes of Regina Montoya and Paul Coggins in Preston Hollow, Patricia Rodriguez and Larry Christian in Addison, and President-Elect Cecilia and Don McKay in Addison.

This program highlighted elegant residences in prestigious Dallas neighborhoods. The architecture, art, history, and the exquisite style of each of these private home’s interior and exterior designs were featured. All attendees enjoyed the program and were in awe of the architectural designs as well as impressed by the hospitality of the hosts. Many attendees felt very fortunate to have been greeted and guided by Regina Montoya herself in her residence, which has been featured in one episode of the TV series *Dallas*.

Proceeds from this fundraising event will support the activities and the mission of LWVD. Please stay tuned for the next LWVD Home Tour Program. And please give a hearty thank you to our home tour hosts and to the participants and donors listed in the Donor Honor Roll.



126 Million Missing
Art exhibit February 10-15



12,600 pairs of baby booties
Each pair represents 10,000 missing women.
Fashion Industry Gallery (FIG), 1807 Ross Ave, Dallas Arts District

Learn more

#126MillionMissing gendap.org

DONATE WHILE YOU SHOP

While you are doing your online holiday shopping, may we recommend you check Smile.Amazon.com.

Go to their website, then click on your account. In the dropdown menu, click on “change your charity,” type in “League of Women Voters of Dallas” in the search line, and then hit “select.”

You’ll be glad you did, and we’ll be glad you did.

SUSAN B. ANTHONY LUNCHEON UPDATE

Come celebrate Debbie Branson as the Susan B. Anthony Award Recipient on Thursday, February 9, 2017. The League will be celebrating the accomplishments of Mrs. Branson in her various roles of impactful service in Dallas. We will commemorate and highlight the importance of civic engagement in transforming our communities.

Sponsorships Available: Please see flyer insert and look for your invitation at the beginning of the New Year.

• • • SAVE THE DATE • • •**PUBLIC FUNDING OF EDUCATION IN TEXAS
INCLUDING THE PROPOSITION FOR VOUCHERS
(HOW TO SURVIVE ON A STARVATION DIET!)****Wednesday, January 25, 2017****11:30 a.m. - 1:30 p.m.****Center for Community Cooperation
2900 Live Oak Street || Dallas, TX 75204
214-821-0911****Be an Informed Citizen and Voter!****Facilitator: The Honorable Mavis Knight – State Board of Education 2002 – 2016****Speakers:****Patti Everett** – Public Policy Consultant with local, state, and national organizations**Dr. Michael Hinojosa** – Superintendent Dallas Independent School District**Janet Imhoff** – League of Women Voters of Texas Public Education Issue Chair**The Honorable Thomas Ratliff** – State Board of Education Member District 9**Chandra Villanueva** – Center for Public Policy Priorities Policy Analyst on School Finance and Education Policy***(The General Meeting and Parking are FREE. Lunch is \$11.)***

To RESERVE a Lunch, you may –

Mail a check to LWV Dallas at 2720 N Stemmons Freeway, Suite 812, Dallas, TX 75207,

Pay online at www.lwvdallas.org, or

Pay at the door.

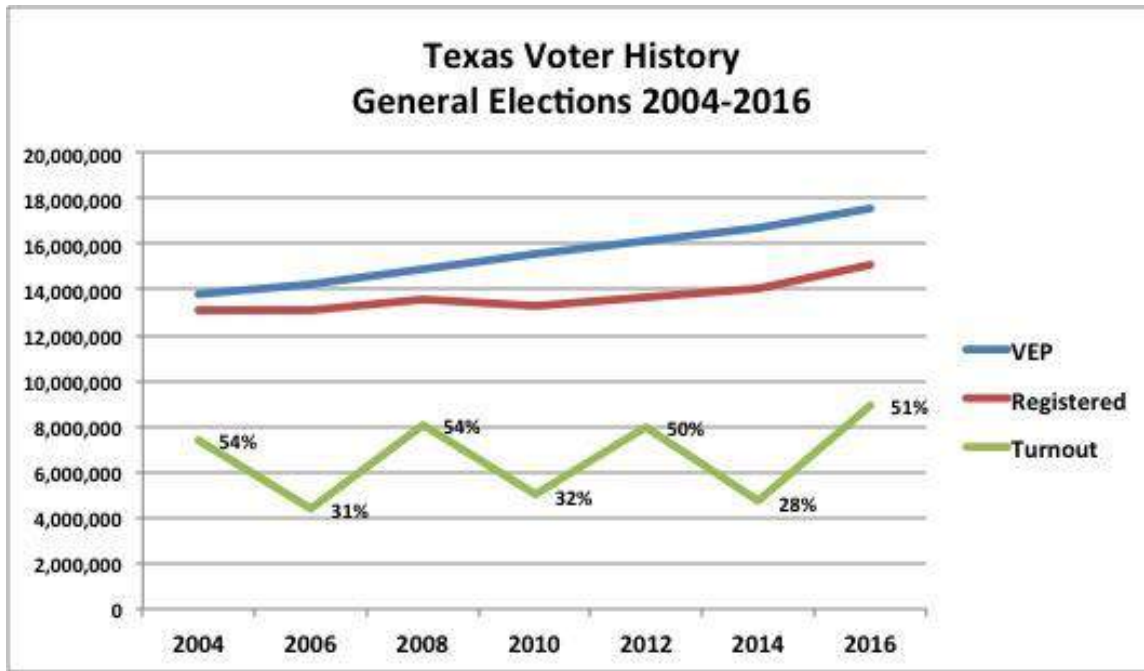
RSVP to lwvdallas@sbcglobal.net or call 214-688-4125.

CORRECTION TO ANNUAL DONOR HONOR ROLL in Summer VOTER - The fiscal year's list of cumulative donations, which appeared in the Summer VOTER, did not include the Susan B. Anthony luncheon donations from Julie and Michael Lowenberg and from Molly Van Ort. These donations move them to the \$1,000+ level for the year. These three longtime members and donors are among our most consistent and generous contributors. Heartfelt thanks go to the Lowenbergs and Molly Van Ort along with sincere regret that they were not listed correctly in the earlier article.

NOVEMBER 2016 ELECTION RESULTS

Nationally, Republicans Donald Trump/Mike Pence won the 2016 presidential election in an upset with the advantage in the Electoral College, while Democrats Hillary Clinton/Tim Kaine won the majority of the popular vote. Results are not final as of the time of this report, but winners are not expected to change.

In Texas (see chart below), voter turnout as a percent of the voter eligible population (VEP) at 51% was similar to prior year presidential election turnout. Registrations reached an all time high, as did the VEP (total population less those under 18, non-citizens and those serving felony sentences). Texas turnout was fifth from the last compared to other states. Nearly three quarters of Texans took advantage of early voting. Over 52,000 Texans voted provisional ballots. As of the date of this report we do not know how many of those were eventually accepted. Just under two-thirds of all voters were straight ticket votes.



In Dallas County, registrations reached an all time high. Turnout as a percent of registrations was similar to prior year presidential election turnout. Over two-thirds of Dallas County voters took advantage of early voting, which is similar to the percent who voted early in previous presidential elections. Two-thirds of all votes were straight ticket votes.

Continued on next page....

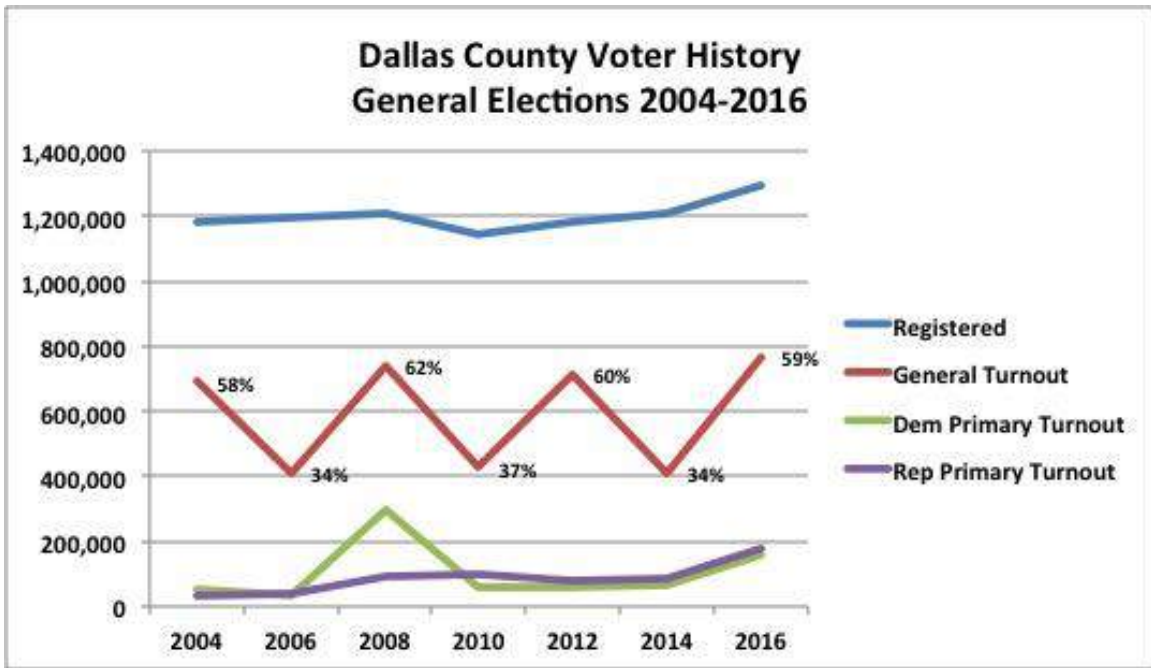


Voter Registration at El Centro College



Voter Registration at Jim Adlers at City Place

NOVEMBER 2016 ELECTION RESULTS *continued...*



Dallas County nearly doubled the number of early voting locations in anticipation of heavy voter turnout, and also extended early voting hours during the first week of early voting. The LWV of Dallas advocated for these changes, as well as for the addition of early voting sites on college campuses for the convenience of students and faculty. Each of these special college centers was open for two days during the last week of early voting. The campuses made good use of the opportunity, as shown in the chart below which lists the number of voters in two days by campus.

<u>Eastfield</u>	1,512
SMU	1,704
Northlake	1,033
University Dallas	397
<u>Cedar Valley</u>	300
Brookhaven	1,282
El Centro	1,417
Mountain View	1,093
Richland	1,967

Most data for the charts is from the Texas Secretary of State and the Dallas County Elections Department except for the Voter Eligible Population figures which are from the United States Election Project.

In Memoriam

Jeanne Malkoff Fagadau

August 10, 1929 – November 21, 2016

A passionate advocate for children and civil rights, Jeanne Fagadau was a national president of the National Council of Jewish Women (NCJW) and a leader with Temple Emanu-El. She worked as the volunteer coordinator for the DISD between 1970-80.

She was also a patron of the arts and served on the board of the Dallas Symphony Orchestra, the Dallas Museum of Art's Education Committee, and the Booker T. Washington Arts Magnet School's President's Council.

Jeanne received the Hannah G. Solomon award from NCJW, the Friend of Education award from the Dallas Classroom Teachers Association, an Honorary Life Membership in the Texas PTA, and the Distinguished Individual Member Award from the Women's Council. She was a 45-year member and donor to the LWV Dallas.

MESQUITE ISD VOTER EDUCATION WORKSHOP

In August 2016, a team of LWV Dallas board members plus a good friend from LULAC conducted a three-hour workshop on teaching students about voting. Thirty-five high school government and economics teachers from Mesquite ISD participated.

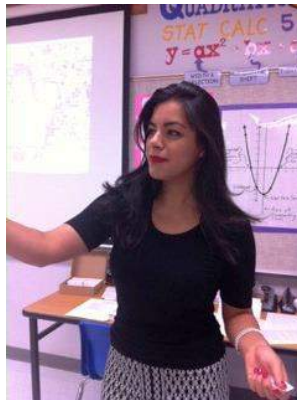


The teachers got good exposure to the Texas Voter Education Guide and the many other modern teaching aids available from the LWV. Teachers heard the latest on the changes to the photo ID law and were introduced to the “Big Three” **Four?** websites

which provide most of what voters need to know—

- LWVTexas.org
- Turbovote.org
- Vote411.org
- DallasCountyVotes.org

Mock elections, student forums, debates, field trips to the polling place, and many other topics were covered, including how to motivate students and discuss issues with them.



The LWV Dallas board members who participated were Rebecca Acuna, Baranda Ferman, Nia MacKay, and Elizabeth Walley. They were joined by Rene Martinez of LULAC.



VOTER REGISTRATION – FALL 2016

Demand for voter registration was very high leading up to the election. LWV Dallas volunteers participated in voter registration drives in many different settings all over the county.

To provide adequate coverage, LWV Dallas volunteers joined with volunteers from LULAC led by Rene Martinez and a very large group from Faith in Texas led by Richard Marcus to register voters at 46 very diverse sites plus 12 DISD high schools.

LWV Dallas volunteers also helped with Dallas County’s annual Voter Registration Day drive. In sum, this effort resulted in around 5,000 new voters being registered.



THE UPDATED LWV DALLAS 2016 – 2017 HANDBOOK IS ONLINE AT WWW.LWVDALLAS.ORG. IF YOU WOULD LIKE A PAPER COPY, PLEASE LET ROSE HARP AT ROSEMARIEHARP@MSN.COM OR THE LEAGUE OFFICE AT LWVDALLAS@SBCGLOBAL.NET KNOW.

Ever wonder who sends out the membership renewal notices and works to keep our membership records up-to-date. Well, you can tip your hat to the membership elves:

Ann Adams, Lea Frailey, and Alice Johnson.

For fifteen years, they have handled this task and kept track of many details. Many thanks, ladies. We couldn't manage without you.

VOLUNTEER WITH THE LEAGUE TO MAKE DEMOCRACY WORK! YOU ARE NEEDED MORE THAN EVER!

By Susybelle Gosslee, Advocacy Vice President

League work is never done. Done... meaning finished. There will be discussion and analysis of the past election for decades throughout the world, I dare say. In the same way, the League's work for justice and equality will be talked about, always moving forward for the betterment of everyone.

Now it is time to start again to Make Democracy Work for all the people.

This statement sounds redundant. Democracy is for all the people. I say this because so many people in Dallas are relegated to the sidelines in our city and county governments. Their neighborhoods are being gentrified. The poor and homeless are increasing. Dallas remains one of ten cities in the U.S. which has never reached the clean air standards. The county votes on issues the same day they are discussed, which does not allow the public to weigh into the discussion. The city is now announcing decisions without having transparency, clear systems of accountability, or public participation.

Public participation requires YOU to participate. So, League members, now is your opportunity to get involved with the decisions you care about. The dust is still settling from the November 8th election, but it doesn't have to settle on you. Do something, because together we can **Make Democracy Work!**

Here are a few fun things to consider:

- **Read more about the issues you care about. Be better informed. Education is key!**
- **Serve on a committee that works on your issue.** You can gather information and plan the next steps towards solving that issue.
- **Volunteer** in the office, with voter registration drives, and on other League committees.
- **Tell the women and girls in your life that they are valued and that you support them.** Every issue affects the quality of women's and girls' lives. Men and boys need better lives too.
- **Invite others to join the League.** Many voices make a louder noise.
- **Contact me** at sgosslee@airmail.net or [214-732-8610](tel:214-732-8610) to let me know what that issue is.

So again! Work on an issue. Let's get started. The show is already on the road, so just join in. You are an important cog in the wheels of the League and our community.

You **will** make a difference and **Make Democracy Work!**

GENERAL AND UNIT MEETING DATES & TOPICS

- Dec 8 & 14 Unit Meetings - "Program Planning and Holiday Party"
- Jan 11/12 Unit Meetings - *Topic TBD*
- Jan 25 General Meeting - "Public Funding of Education in Texas"
- Feb General Meeting - "Election Options – Pros & Cons" *Date TBD*
- Feb 8/9 NO UNIT MEETINGS
- Feb 9 Susan B. Anthony Luncheon
- Mar 8/9 Unit Meetings - *Topic TBD*
- Mar 25 Annual Meeting
- Apr 12/13 Unit Meetings - *Topic TBD*
- May 10/11 Unit Meetings - "Do Your Own Thing!"



UPDATE ON CHARTER SCHOOL DATA PRESENTED AT NOVEMBER UNIT MEETINGS

By Bill Betzen, Education Issues

The topic of the November Unit meetings was a comparison of Texas' traditional public schools and charter schools using Texas Education Agency (TEA) data. The TEA publishes a Snapshot of data that is collected from Texas public school districts and reported to the public annually.

According to the law, traditional public schools have the primary responsibility to implement the state's system of public education and ensure student performance in accordance with the Texas Education Code. Charter schools receive funding from the state to improve student learning and provide a school choice within the public school system. They are subject to fewer state regulations than other public schools. They also were designed to allow more innovation and greater flexibility in educating

students. State law requires fiscal and academic accountability by both systems.

Texas' Charter schools tend to be located in high poverty areas. In District 6 of the DISD, which is located in the southwest corner of the city and has many minority children and low income families, 53% of the children are enrolled in charter schools.

Some of the children come into the area to attend charter schools due to the open enrollment policies. The number of charter schools is increasing in the DISD. A charter school has a thirty-mile geographic area. Traditional public schools accept students from the surrounding neighborhood.

The Snapshot data bases are online at <http://tea.texas.gov/perfreport/snapshot/index.html>, the TEA website, or at www.lwvdallas.org. Included in the data for public school advocates are the PEIMS Financial files at <http://tea.texas.gov/financialstandardreports/>. Testing irregularities were given as the reason for the delay in the release of the data this year.

The data sheets for all Texas' charter schools, all Texas' traditional schools, and DISD schools were handed out at the November meetings. **The 2015 Snapshot shows that in Texas:**

1. The total number of Texas' students in 2015 charter schools was 227,827 and 4,987,455 in Texas' traditional schools. *(Line item 3)*
2. The 2015 4-year longitudinal graduation rate for Texas' charter schools was 63.3% compared to 91.3% for Texas' traditional public schools and 86.4% in the DISD. *(Line item 19)*
3. The annual dropout rate for grades 9-12 for Texas' charter schools in 2015 was 4.7% compared to 1.5% for Texas' traditional public schools and 2.1% in the DISD. *(Line item 18)*
4. The college admissions test was taken by 49.9% of charter students, 66.9% of Texas' traditional public school students, and 78.4% of DISD students. *(Line item 37)*
5. The average number of years of experience for Texas' charter schools' teachers was 4.1 and 11.3 for Texas' traditional schools. Dallas' teachers have 10.5 years of experience. *(Line item 57)*
6. The percent of teachers with advanced degrees for all charter schools was 19.8%, 24.1% for Texas' traditional public schools, and 33.3% in the DISD. *(Line item 58)*

Seeking Volunteers for 2017 Susan B. Anthony Luncheon Committee

Do you want to help plan the Leagues Biggest Annual Fundraiser? Bring your skills and input to the Susan B. Anthony Luncheon Committee.

For those members who enjoy party planning, have public relations knowledge, enjoying getting sponsorships, or perhaps can lend their organizational talents to logistics and the registration table, please contact SBA Luncheon Chair, Dominique Torres, [214-734-0302](tel:214-734-0302) or Dominiqueptorres@gmail.com for committee information.

Help make this Luncheon a Success.

Join the **League of Women Voters of Dallas**

where hands-on work to safeguard democracy leads to civic improvement.

LEAGUE OF WOMEN VOTERS OF DALLAS DIVERSITY STATEMENT

The League of Women Voters of Dallas (LWVD), in both its values and practices, affirms its belief in, and commitment to, diversity and pluralism.

LWVD welcomes any person to participate in any activity of LWVD, regardless of gender, race, religion, age, sexual orientation, national origin, disability or political persuasion.

LWVD recognizes that diverse perspectives are important and necessary for responsible and representative decision-making.

LWVD subscribes to the belief that diversity and pluralism are fundamental to the values it upholds and that inclusiveness enhances its capability to respond more effectively to changing conditions and needs.

LWVD affirms its commitment to reflecting diversity in its membership, board, staff and programs.

It's not for women only!

Membership Levels

___\$60/year Individual ___\$30 additional member at same address

___\$150/year Patron ___\$500/year Benefactor

___Scholarship information available upon request. Call 214-688-4125

___\$25/year Student \$___ Contribution to LWVD Scholarship Fund

Name(s) _____

Address _____

Phones: Home _____ Work _____

Cell _____ E-mail _____

**Mail your payment to -
League of Women Voters of Dallas**

2720 N Stemmons Frwy, Ste 812 S
Dallas, TX 75207

**League of Women Voters of Dallas
2720 N. Stemmons Freeway, Suite 812
Dallas, TX 75207-2241**

Voice & Fax: 214 688-4125

E-mail: lwvdallas@sbcglobal.net

The Dallas **VOTER** is the official publication of the League of Women Voters of Dallas, published 10 times yearly.

Volume 23, Number 3



**Copied on
Recycled Paper**

DECEMBER 2016 – Happy Holidays!

Sunday	Monday	Tuesday	Wednesday	Thursday	Friday	Saturday
November 27	28	29	30	December 1 Board meeting 11:45 am League office	2	3
4	5	6	7	8 Thu. Unit Mtgs 'Program Planning & Holiday Party' (see pg. 3)	9	10
11	12	13 January VOTER Articles <u>DUE</u>	14 <u>Wed. Unit Mtg</u> 'Program Planning & Holiday Party' (see pg. 3)	15	16	17
18	19	20	21 First Day of Winter	22	23 OFFICE CLOSED	24 Christmas Eve
25 Christmas Hanukkah begins	26 OFFICE CLOSED Kwanzaa begins	27	28	29	30 OFFICE CLOSED 1/2 Day	31 New Years Eve
January 1, 2017 New Years	2 OFFICE CLOSED	3 OFFICE CLOSED	4	5 Board meeting 11:45 League office	6	7



Mark-Your-Calendars, Save-the-Dates and Participate!

21st Annual Susan B. Anthony Luncheon Thursday February 9, 2017	Gen Mtg - Public Funding of Education in Texas Wednesday, January 25, 2017 11:30 a.m. - 1:30 p.m.	52nd Annual Women's Symposium Wednesday, March 8, 2017 SMU
Tom Thumb Good Neighbor Program Good Neighbor #: 2917 3rd Quarterly Payment: \$149.98	Donate While You Shop! Smile.Amazon.com Click "change your charity", Type "League of Women Voters of Dallas"	Kroger Community Rewards Community Rewards#: 95073 NEW: Sign up at Kroger